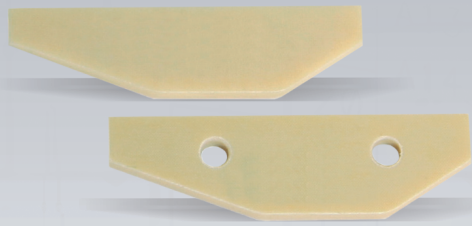




ENHAS[®]

DIŞ TİCARET LTD. ŞTİ.



www.enhasdisticaret.com



www.enhasdisticaret.com

| | | | |
|----|----|------|----|
| 1 | | →I01 | 23 |
| 2 | 11 | →I02 | 22 |
| 3 | 12 | →I03 | 21 |
| 4 | 13 | ←I04 | 20 |
| 5 | 14 | →I05 | 19 |
| 6 | 15 | →I06 | 18 |
| 7 | | →I07 | 17 |
| 8 | | →I08 | 16 |
| 9 | 8 | ←I09 | 15 |
| 10 | 9 | →I10 | 14 |
| 11 | 10 | | |
| 12 | 11 | | |

| | | | |
|---|---|------|----|
| 1 | | →I01 | 23 |
| 2 | 1 | ←I02 | 22 |
| 3 | 2 | ←I03 | 21 |
| 4 | 3 | ←I04 | 20 |

INDEX

| | |
|-----------------------------------|----|
| CARBON PROFILES | 2 |
| MECHANICAL PARTS | 4 |
| COLOUR SELECTOR PARTS | 6 |
| CENTER RAPIER CLAMP CONTROL PARTS | 7 |
| OIL FILTER AND PARTS | 7 |
| AIRJET PARTS | 7 |
| RACE BOARD PARTS | 8 |
| RAPIER HEAD PARTS | 8 |
| SCISSORS PARTS | 10 |
| ELECTRONIC PARTS | 12 |
| BEARINGS | 13 |
| ELECTRONIC CARDS | 13 |





8 mm

8 mm Inner Carbon

8 mm Outer Carbon

8 mm Complete Carbon



| NEW TYPE YENİ TİP | mnb 180 | mnb 190 | mnb 200 | mnb 210 | mnb 220 | mnb 230 | mnb 240 | mnb 250 | mnb 260 | mnb 270 | mnb 280 | mnb 290 | mnb 300 | mnb 310 | mnb 320 |
|-------------------------------------|------------|------------|------------|------------|------------|------------|------------|------------|------------|------------|------------|------------|------------|------------|------------|
| Inner Carbon İç Karbon | 3471562E | 3471562F | 3471562G | 3471562H | 3471562K | Request | Request | Request | Request | Request | 3471388B | Request | Request | Request | 3471388F |
| Outer Carbon Dış Karbon | 3471650G | 3471650H | 3471650K | 3471650L | 3471650M | Request | Request | Request | Request | Request | 3471650V | Request | Request | Request | 3471651A |
| Complete Carbon Komple Karbon | 3471633X | 3471633Y | 3471634A | 3471634B | 3471634C | Request | Request | Request | Request | Request | 3471634K | Request | Request | Request | 3471634P |



| OLD TYPE ESKİ TİP | mnb 170 | mnb 180 | mnb 190 | mnb 200 | mnb 210 | mnb 220 | mnb 230 |
|-------------------------------------|------------|------------|------------|------------|------------|------------|------------|
| Inner Carbon İç Karbon | 3470059T | 3470059U | 3470059V | Request | 3470059X | 3470059Y | Request |
| Outer Carbon Dış Karbon | 3471632M | 3471632N | 3471632P | Request | 3471632T | 3471632U | Request |
| Complete Carbon Komple Karbon | 3471631D | 3471631E | 3471631F | Request | 3471631H | 3471631K | 3471632A |

The production of Mnb until 360 is possible.

CARBON PROFILES



9 mm Inner Carbon

9 mm Outer Carbon

9 mm Complete Carbon

9 mm

| | mnb 180 | mnb 190 | mnb 200 | mnb 210 | mnb 220 | mnb 230 | mnb 240 | mnb 250 | mnb 260 | mnb 270 | mnb 280 | mnb 290 | mnb 300 | mnb 310 | mnb 320 | mnb 330 | mnb 340 | mnb 350 | mnb 360 |
|---|----------|----------|----------|----------|----------|---------|----------|----------|---------|---------|----------|---------|---------|---------|----------|---------|----------|---------|----------|
| Inner Carbon İç Karbon | 3471362E | 3471362F | 3471362G | 3471362H | 3471362K | Request | 3471362M | 3471362N | Request | Request | 3471359W | Request | Request | Request | 3471360B | Request | 3471360D | Request | 3471360F |
| Outer Carbon Dış Karbon | 3471827M | 3471827N | 3471668M | 3471827R | 3471827T | Request | 3471827V | 3471827W | Request | Request | 3471828A | Request | Request | Request | 3471827E | Request | 3471828G | Request | 3471828K |
| Complete Carbon Komple Karbon | 3471829L | 3471829M | 3471829N | 3471829P | 3471829R | Request | 3471829U | 3471829V | Request | Request | 3471829Y | Request | Request | Request | 3471830D | Request | 3471830F | Request | 3471830H |

10 mm

10 mm Inner Carbon

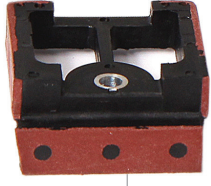
10 mm Outer Carbon

10 mm Complete Carbon



| | mnb 190 | mnb 200 | mnb 210 | mnb 220 | mnb 230 | mnb 240 | mnb 250 | mnb 260 | mnb 270 | mnb 280 | mnb 290 | mnb 300 | mnb 310 | mnb 320 | mnb 330 | mnb 340 | mnb 350 | mnb 360 |
|---|----------|----------|----------|----------|----------|----------|----------|----------|----------|----------|----------|----------|----------|----------|----------|----------|----------|----------|
| Inner Carbon İç Karbon | 3471588G | 3471588H | 3471588K | 3471588L | Request | 3471588N | 3471588P | Request | Request | 3470384Y | Request | Request | Request | 3471587K | Request | Request | Request | Request |
| Outer Carbon Dış Karbon | 34788423 | 34788424 | 34788425 | 34788426 | 34788427 | 34788428 | 34788429 | 34788430 | 34788431 | 34788432 | 34788433 | 34788434 | 34788435 | 34788436 | 34788437 | 34788438 | 34788439 | 34788440 |
| Complete Carbon Komple Karbon | 34764744 | 34764745 | 34764746 | 34764747 | 34764748 | 34764749 | 34764750 | 34764751 | 34764752 | 34764753 | 34764754 | 34764755 | 34764756 | 34764757 | 34764758 | 34764759 | 34764760 | 34764761 |

CARBON PROFILES

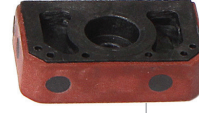


34346205 GUIDE PIECE
CARBON TAKOZU

3471310R STOP PIECE
CARBON BAĞLANTI PARÇASI



3471310T STOP PIECE
CARBON BAĞLANTI PARÇASI



34339317 GUIDE PIECE
CARBON TAKOZU

MECHANICAL PARTS



3472287N GUIDE ROLLER
ÜST BASKI MAKARASI



34344550 GROVED BALL BEARING
ÜST BASKI RULMANI GENİŞ



34342937 GROVED BALL BEARING
ÜST BASKI RULMANI DAR



34341207 LUBRICATION PIECE
CARBON YAĞLAMA SABUNU



34347268 LUBRICATION PIECE
CARBON YAĞLAMA SABUNU



3471032E GUIDE ROLLER (NEW STYLE)
ÜST BASKI MAKARASI (YENİ TİP)



34341153 SHIM
MAKİNA ALT LASTİĞİ



3470160H GUIDE ROLLER
ÜST BASKI MAKARASI



3471404R ROLLER SUPPORT LHS CPL.
SOL ÜST BASKI KOVANI KOMPLE



3471404T ROLLER SUPPORT RHS CPL.
SAĞ ÜST BASKI KOVANI KOMPLE





34338128 CONTROL BAR RHS
SAĞ BASKI



34348697 CONTROL BAR RHS
SAĞ BASKI



34339033 CONTROL BAR LHS
SOL BASKI



34349284 CONTROL BAR LHS
SOL BASKI



34345723 CONTROL BAR LHS
SOL BASKI



34348903 CONTROL BAR LHS
SOL BASKI

34344250 GUIDE PIECE RHS
SAĞ BEKLEME TAHTASI



34344241 GUIDE PIECE LHS
SOL BEKLEME TAHTASI



34348713 GUIDE PIECE RHS
SAĞ BEKLEME TAHTASI



34470985 SWIVEL HEAD
SOL TIĞ MAFSALI

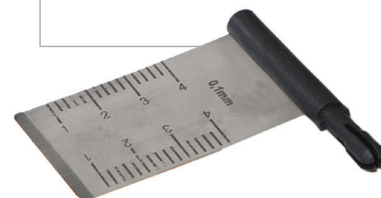


34470984 SWIVEL HEAD
SAĞ TIĞ MAFSALI



34332989 SPRING BOLT LHS
SOL ATKI FREN SACI

34332990 SPRING BOLT RHS
SAĞ ATKI FREN SACI



COLOUR SELECTOR PARTS



3472219P

CLAMP ANGLE
ECS KAYIS TUTUCU MIKNATISLI



34342457

CLAMP ANGLE
ECS KAYIS TUTUCU MIKNATISSIZ



3472219R

ECS COMPLETE
ECS KOMPLE

34342706

TOOTHED BELT FOR ECS
ECS KAYIŞI



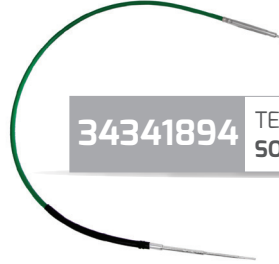
34339469

GUIDE ROLLER
ECS KAYIŞ MAKARASI



34341894

TELEFLEX CABLE
SOL YALANCI KENAR SPRAL



34341895

INTERMEDIATE PIECE
SOL YALANCI KENAR SPRAL İÇ HALAT



3471917C

STEPPING MOTOR CPL
ESC MOTORU



34339468

GUIDE ROLLER
ECS KAYIŞ MAKARASI



34344661

GUIDE PIECE
ECS ÇUBUK TUTUCU 1

34345392

GUIDE PIECE
ECS ÇUBUK TUTUCU 2



3470344U

THREAD ROD CPL
ECS ÇUBUGU



34342713

GUIDE BAR
ECS ÇUBUK BAĞLANTISI



CENTER RAPIER CLAMP CONTROL PARTS



34325937 GROOVED BALL BEARING
ORTA AÇICI RULMANI

34789998 CAM LHS
SOL ORTA AÇICI EKSANTİRİĞİ



3470942V CAM RHS
SAĞ ORTA AÇICI EKSANTİRİĞİ



OIL FILTER AND PARTS



34338554 TUBE RHS FOR GEARBOX
SAĞ ŞANZUMAN YAĞ HORTUMU

34352783 OIL FILTER FOR GEARBOX
ŞANZUMAN YAĞ FİLTRESİ



AIRJET PARTS



34375461 WEFT STOP MOTION
AIRJET ATKI SENSÖRÜ

34345046 VALVE PISTON CPL
HAVA VALF ÇEKİRDEĞİ



RACE BOARD PARTS



3470129B

RACE BOARD CPL.(95mm)
TEFE PİSTİ 95mm.



34430478

SLAY COATING
TEFE ÇUHASI 22MM



3470128X

RACE BOARD CPL.(195mm)
TEFE PİSTİ 195mm.

3470337E

RACE BOARD CPL.
TEPE PİSTİ (ORTA)



34339439

SLAY COATING
TEFE ÇUHASI 24MM



RAPIER HEAD PARTS



3472347R

RAPIER HEAD LHS CPL (9mm CROM)
9mm SOL DOLU KROM ALÇAK YANAKLI MEKİK

3472277X

RAPIER HEAD RHS CPL (9mm CROM)
9mm SAĞ DOLU KROM ALÇAK YANAKLI MEKİK



3472559C

RAPIER HEAD LHS CPL (9mm BLACK)
9mm SOL DOLU ALÇAK YANAKLI MEKİK



3472560F

RAPIER HEAD RHS CPL (9mm BLACK)
9mm SAĞ DOLU ALÇAK YANAKLI MEKİK



3471246V

CLAMPING LEVER LHS
SOL MİLENYUM MEKİK MANDALI



3471247B

CLAMPING LEVER RHS
SAĞ MİLENYUM MEKİK MANDALI

3432832I

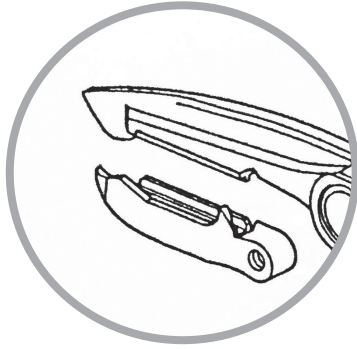
LOCKING ELEMENT
MEKİK ÇİVİSİ



34343743

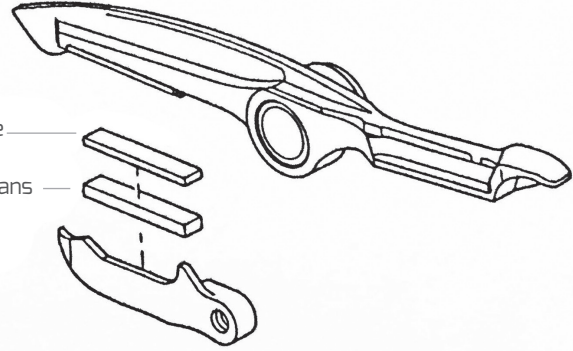
GUIDE PIECE
MEKİK YAN FİBERİ





Clamp Piece
Tungsteen Carbide

Carbide
Vulkollans



TUNGSTEEN CARBIDE



3470688C

TUNGSTEEN CARBIDE INS LHS CPL
DÜZ SOL ELMASLI SÜNGER



3472544P

TUNGSTEEN CARBIDE INS LHS CPL
BOYUNA ÇİZGİLİ SOL ELMASLI SÜNGER



3470687V

TUNGSTEEN CARBIDE INS LHS CPL
İNCE TIRTIL SOL ELMASLI SÜNGER



3472545N

TUNGSTEEN CARBIDE INS RHS CPL
BOYUNA ÇİZGİLİ SAĞ ELMASLI SÜNGER



3470879T

TUNGSTEEN CARBIDE INS RHS CPL
DÜZ SAĞ ELMASLI SÜNGER



3472545N

TUNGSTEEN CARBIDE INS RHS CPL
İNCE TIRTIL SAĞ ELMASLI SÜNGER

VULKOLLANS INSERT



34342827

VULKOLLAN INSERT LHS
SOL MEKİK SÜNGERİ



34343905

VULKOLLAN INSERT RHS
SAĞ MEKİK SÜNGERİ

CLAMP PIECE



3470985L

CLAMP PIECE RHS CPL
DÜZ ELMASLI
SAĞ KOMPLE ÇENE



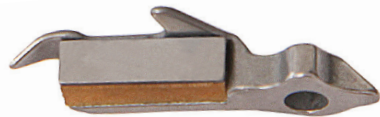
3470985V

CLAMP PIECE RHS CPL
İNCE TIRTIL ELMASLI
SAĞ KOMPLE ÇENE



3472545P

CLAMP PIECE RHS CPL
BOYUNA ÇİZGİLİ ELMASLI
SAĞ KOMPLE ÇENE



3472544R

CLAMP PIECE LHS CPL
BOYUNA ÇİZGİLİ ELMASLI
SOL KOMPLE ÇENE



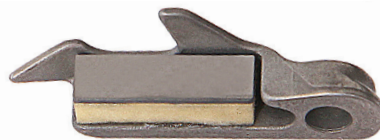
3471199H

CLAMP PIECE LHS CPL
İNCE TIRTIL ELMASLI
SOL KOMPLE ÇENE



3471199G

CLAMP PIECE LHS CPL
DÜZ ELMASLI
SOL KOMPLE ÇENE

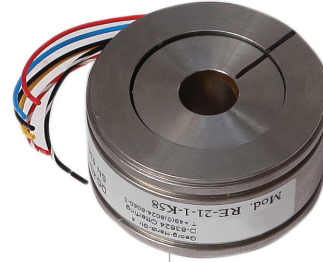


3472559D

CLAMP PIECE LHS CPL
DÜZ ELMASLI
SOL KOMPLE ÇENE



34763738 POSITION GIVER
AÇI ENCODERİ



34763739 POSITION GIVER
SERVO MOTOR ENCODERİ



34392642 PROXIMITY SWITCH
AYAK ARAMA SENSÖRÜ



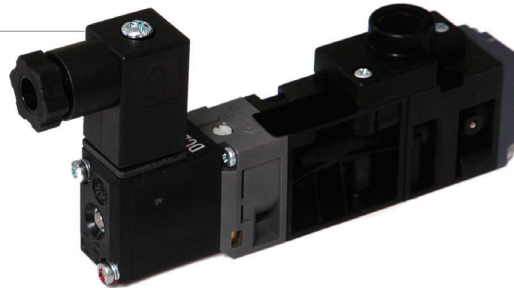
34392647 CABLE FOR PROXIMITY SWITCH
AYAK ARAMA SENSÖR KABLOSU

34388587 PROXIMITY SWITCH
KAVRAMA HIZ SENSÖRÜ

34398705 CABLE FOR CLUTCH SENSOR
KAVRAMA SENSÖR KABLOSU



34384218 SELONOID VALVE
AYAK ARAMA VALFI



34399721 INDUCTIVE SWITCH
YEŞİL SENSÖR



34387776 GIVER
METRE SAYAÇ MOTORU



34394151 CABLE FOR RIGHT SIDE
SAĞ KENAR KESME MAKAS KABLOSU



34335260 COUPLING
METRE SAYAÇ MOTOR PLASTİĞİ



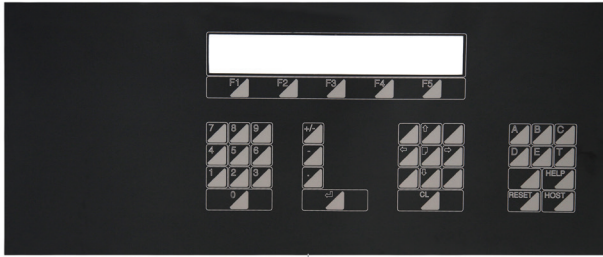
34394154 CABLE FOR LEFT SIDE
SOL KENAR KESME MAKAS KABLOSU



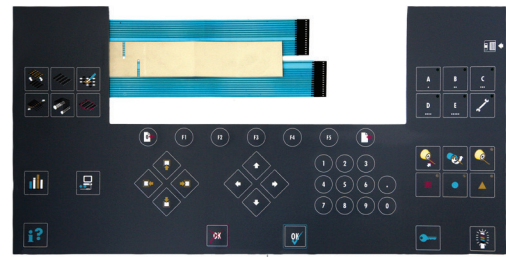
34389851 ELTEX CABLE
ELTEX KABLOSU



34389783 SENSOR
ELTEX 8'Lİ



34387978 DIALOG PANEL 1 TUŞ TAKIMI
KEYBOARD FOR DIALOG PANEL1



34389407 DIALOG PANEL 2 TUŞ TAKIMI
KEYBOARD FOR DIALOG PANEL2



34389575 LIGHT FOR DIALOG PANEL
DIALOG PANEL IŞIĞI



3470679B AIRJET SCISSOR
AIRJET MAKASI



3470614E AIRJET WEFT SCISSOR
AIRJET ATKI MAKASI

34705805 TEMPLE SCISSORS RHS
SAĞ KENAR KESME MAKASI



3472137U WEFT SCISSORS LONG
ATKI MAKASI



3472434M WEFT SCISSORS LONG
ATKI MAKASI



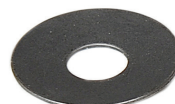
34705804 TEMPLE SCISSORS LHS
SOL KENAR KESME MAKASI



3470898T SCISSORS RHS COMPLETE
SAĞ KENAR MAKASI



3470897E SCISSORS LHS COMPLETE
SOL KENAR MAKASI



34736452 CUP SPRING
MAKAS PULU

BEARINGS



34338272 ANGULAR CONTACT BALL BEARING
KAVRAMA RULMANI-CLUTCH BEARING

34339671 ANGULAR CONTACT BALL BEARING - NEW TYPE
KAVRAMA RULMANI YENİ MODEL



34339060 GROOVED BALL BEARING
PALET AYAK RULMANI

ELECTRONIC CARDS



345000 ELECTRONIC CARDS
AIRJET MODUL



345002 ELECTRONIC CARDS
AIRJET DOBBY MODUL



345003 ELECTRONIC CARDS
TAKE UP MODUL



345001 ELECTRONIC CARDS
START STOP MODUL



345004 ELECTRONIC CARDS
WARP LET OF MODUL



Adnan Kahveci Mahallesi, Harbiye Caddesi No:34 34528 Beylikdüzü - İSTANBUL
T. +90 212 422 61 42 pbx F. +90 212 422 40 53
info@enhasdisticaret.com

www.enhasdisticaret.com